



DIAGNOSTIC SOFTWARE

for the MEFI Electronic Control Module

Installation and Users Manual

v 1.6



The MEFIpro SCAN interface cable.



The MEFIpro SCAN USB Disk.



Overview

Installing the Software	1.0
Installation	1.1
Registration	1.2
Menu	2.0
Start Communications	2.1
Dashboard	3.0
Dashboard Options	3.1
Logging	4.0
Logging Options	4.1
Change Time Scaling	4.2
Change Unit Scaling	4.3
Fault Codes	5.0
Calibration Checks	5.1
Trouble Shooting	6.0

1.0 Installing the Software

1.1 Installation

Insert your MEFIpro Scan USB disk into an open USB port on your computer. Create a new folder on computer desktop. Copy the contents of your MEFIpro Scan USB disk to the new folder you just created, now you will need to install the driver for your MEFIpro Scan communications cable.

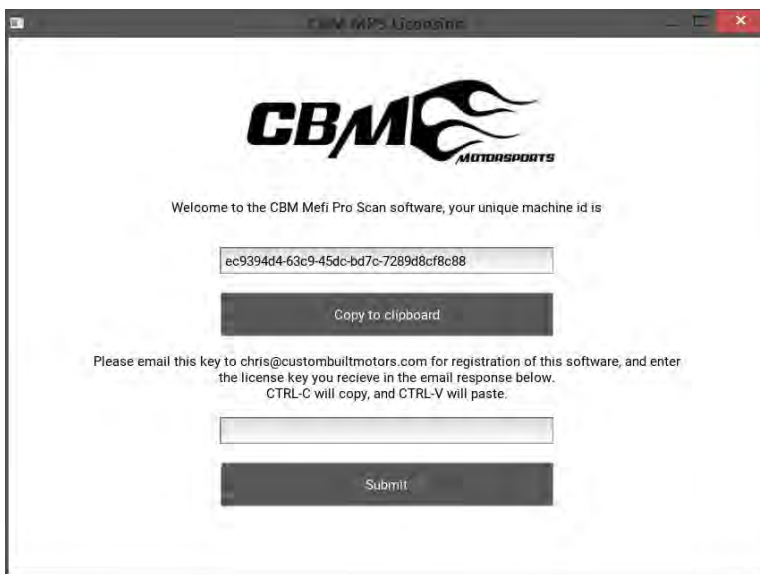
Open the new folder you just created then open the Driver folder and then open the 32 bit or 64 bit (depending on your computer operating system) folder and finally double click on the file named **Installation tool.exe**.

To run MEFIpro Scan open the new folder you created earlier then double click on the file named **CBM_MPS 1_6**.

WARNING: Do not try to install or run the software straight from the MEFIpro Scan USB disk!!!

1.2 Registration

Licensing window.



When you run MEFIpro Scan for the first time a window named CBM MPS licensing will appear, the first box in that window will contain your computers id, click the button below it named "Copy to clipboard".

Next compose an Email, paste (CTRL-V) the id into the contents of the email and send it to: chris@mefipro.com Once we receive your id we will send you a license key via email.

When you receive the license key enter it into the second box of the window named CBM MPS licensing, then click the button named "Submit".

MEFIpro Scan is now ready to use.

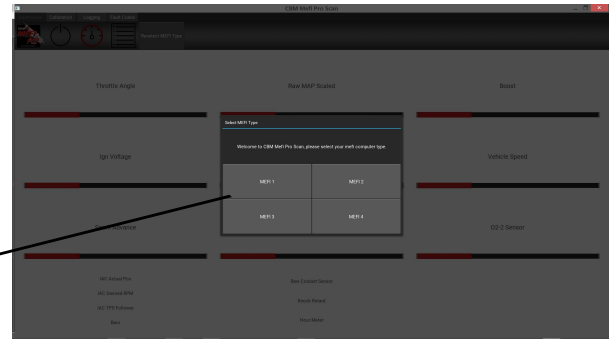
If you encounter any problems on installing or running MEFIpro Scan please see the trouble shooting section of this manual.

Back to Overview

1.2 First Run

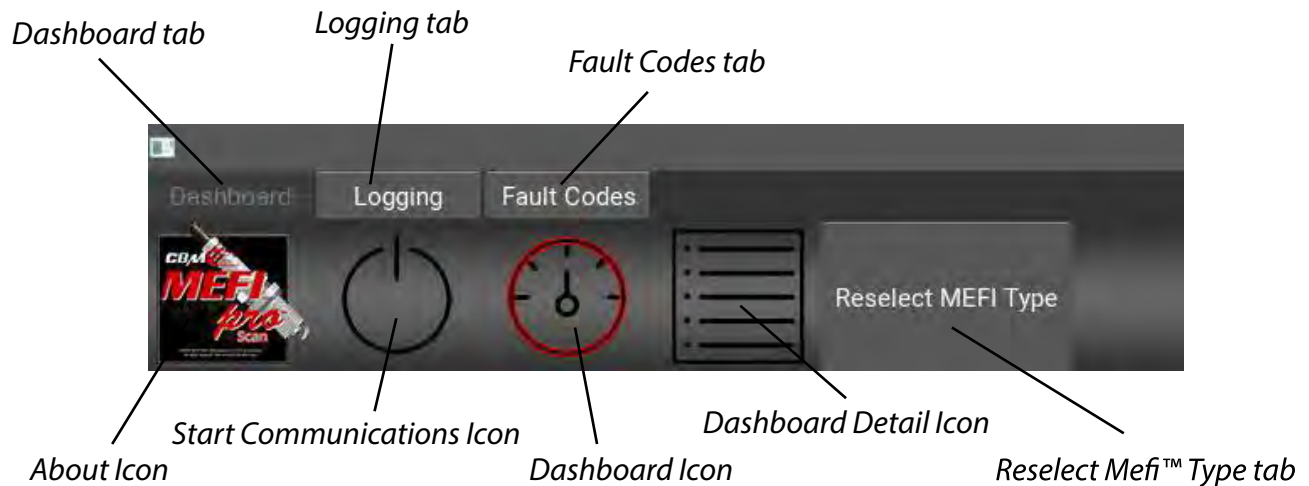
The first time you run MEFIpro SCAN a screen will appear asking you to select which type of MEFI ECU you have .

Select your MEFI.



2.0 Menu

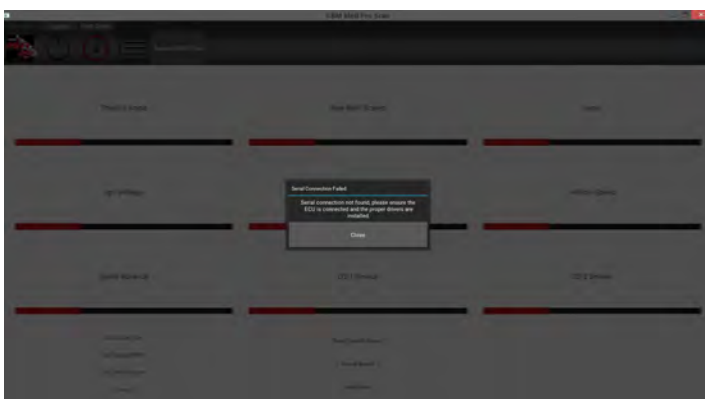
Mefi Pro Scan`s menu consists of tabs and icons, they are the Dashboard tab, the Logging tab, the Fault Codes tab, the About icon, the Start Communications icon, the Dashboard icon and the Dashboard Detail icon. Some tabs once selected will show options for that tab.



2.1 Start Communications

To begin communication with your Mefi™ computer ensure the interface cable is connected to the vehicle's Mefi™ computer, start the vehicle or turn the key to the ON position and click on the Start Communications icon from the menu.

Serial Connection Failed window

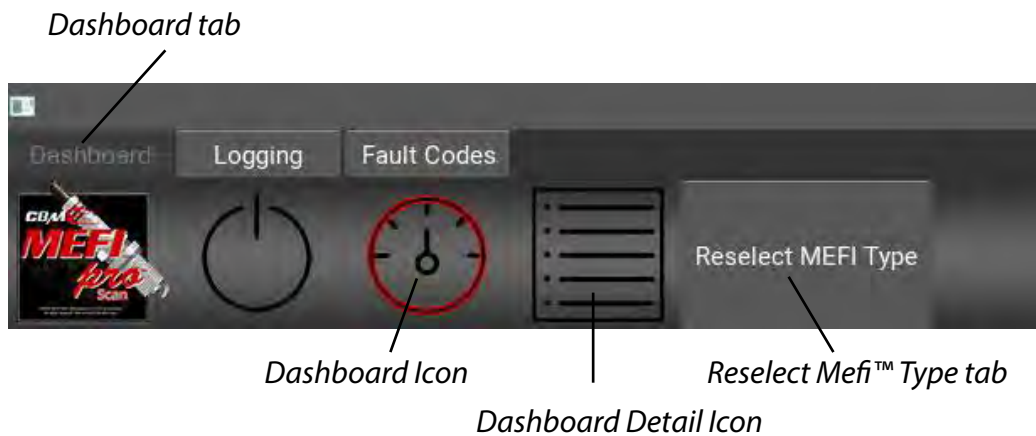


When you click on the **Start Communications** icon and the connection fails this window will appear. Check the interface cable connection at the Mefi™ computer and PC and try again.

Back to Overview

3.0 Dashboard Options

There are three options within the Dashboard tab, Dashboard, Dashboard Detail and Reselect Mefi™ Type. The Dashboard options are accessed by clicking on the Dashboard tab.



Dashboard window



When you click on the Dashboard icon this window will appear.

Dashboard Detail window

Hardware Version	Engine Rev	Engine Rev
Number of Cylinders	Engine Displacement	Engine Type
Oil Pressure	IAC Actual Pos	IAC Desired RPM
IAC TPR Exhaust	Rpm TPR Sensor	TPS Sensor Voltage
Throttle Angle	Raw MAP Cnts	I-Aux MAP Sensor
2-Aux MAP Sensor	Spool MAP Sensor	MAP Sensor Voltage
Raw MAP Sensor	Revolt	Revolt
Raw Coolant Sensor	Coolant Sensor Voltage	Raw MAP Sensor
MAP Sensor Voltage	Ign Voltage	Oil Pressure (CAT) Voltage
RPM	Vehicle Speed	Rpm Time
High Pulse	High Pulse	SPN
Vehicle Revolt	Vehicle Revolt	Spark Advance
Raw Coolant TPR	Oil Motor DC	COH-DC
ETC Pedal Angle	ETC Sensor Pos	ETC Raw Pedal
ETC Raw Pedal	ETC Raw Throttle	O2-1 Sensor
O2-1 Sensor	O2-1 Cross Cnts	O2-2 Cross Cnts
O2-2 Sensor	O2-1 BLM	O2-2 BLM
ETC Coolant	YDR Actual	ESR Air Temp
ESR DC	Fuel Pressure	Fuel Temp
ESR Revolt	ESR Temp	Max Oil Temp
Max Thrust Load	Max Thrust Load	Max Spark Charge
Spark with Maf	Spark with Maf	Max RPM
Max Maf	Time 0.000 RPM	Time 0.000 RPM

When you click on the Dashboard Detail icon this window will appear.

NOTE: You may reselect your type of Mefi™ computer by clicking on the Reselect Mefi™ Type tab.

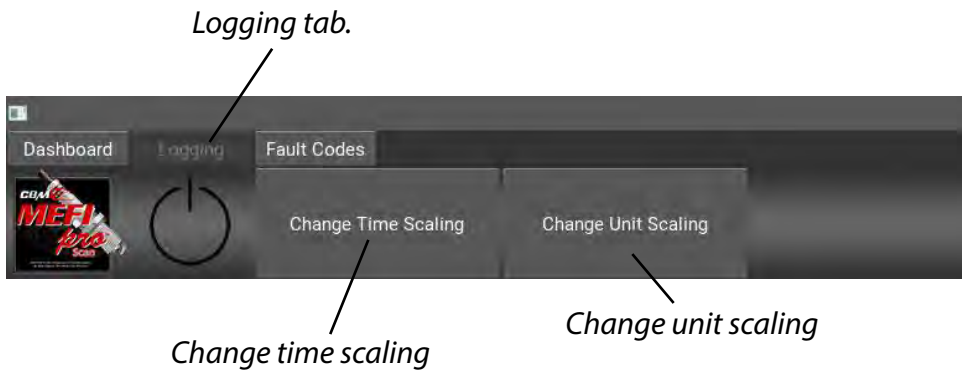
Back to Overview

4.0 Logging

Logging is the reading of data from a variable set of outputs.

4.1 Logging Options

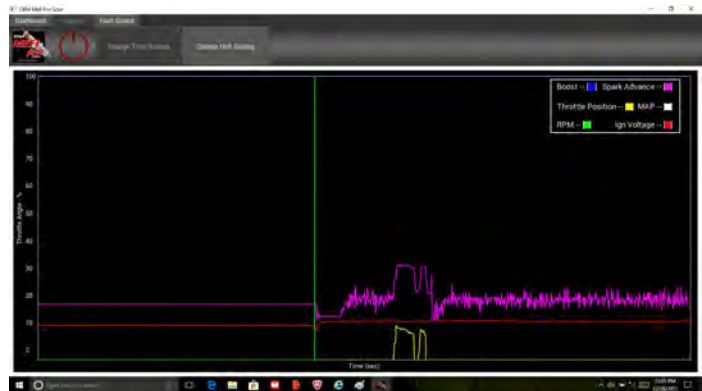
There are two options within the Logging tab, Change Time Scaling and Change Unit Scaling. The Logging options are accessed by clicking on the Logging tab.



Change time scaling window

4.2 Change Time Scaling

When you click on the Change Time Scaling tab this window will appear, enter the appropriate numerical value and click Set Scaling.



4.3 Change Unit Scaling

Change unit scaling window



When you click on the Change Unit Scaling tab this window will appear, select the appropriate item and click Apply.

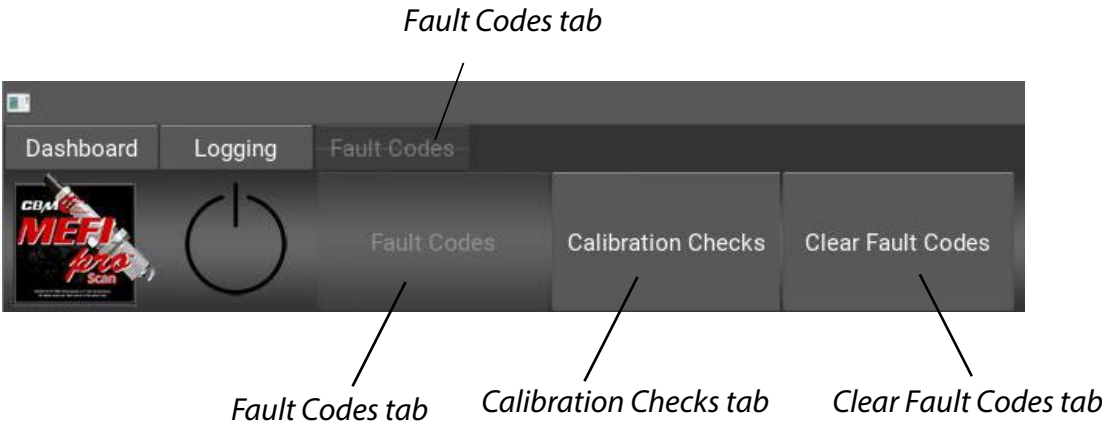
[Back to Overview](#)

5.0 **Fault Codes**

A fault code is a programmed indicator in the Engine Control Module that is triggered by a failed diagnostic test of a device or system. There are two types of fault codes that are used; Current Fault Codes and Historical Fault Codes.

5.1 **Fault Codes Options**

There are two options within the Fault Codes tab, Fault Codes and Calibration Checks. The Fault Codes options are accessed by clicking on the Fault Codes tab. To clear Fault Codes click the Clear Fault Codes tab while the Fault Codes window is open.



Fault Codes window

When you click on the Fault Codes tab this window will appear.



Calibration Checks window



When you click on the Calibration Checks tab this window will appear.

6.0 **Trouble Shooting**

Problem. Trouble launching and or running MEFlpro Scan.

Solution. Copy the file named **MSVCR100.dll** from the MEFlpro Scan software disc to your computers desktop and leave it there. Restart MEFlpro Scan.

Problem. MEFlpro Scan communications cable not recognized.

Solution. Make sure you have installed the appropriate driver for your operating system.
The file named **CDM20824_Setup MPS DRIVER XP OS** is for Windows XP.
The file named **CMD21228_Setup MPS DRIVER WIN-DOWS 7 - 10** is for Windows 7, Windows 8 and Windows 10

Problem. Fault codes will not clear.

Solution. You may need to repeat the Clear Fault Codes process 2 to 3 times.

Need help on installing or running MEFlpro Scan? Please call **909.291.7550 ext. 2001** or email **chris@mefipro.com**

Notes:

Back to Overview



Check out the #1 MEFI™ tuning software



- ▶ MEFIpro™ Polaris Slingshot Tuning Software
- ▶ MEFIpro™ Mefi 5a Tuning Software

MEFIpro.com